



Stronger together



# DRY FLEX<sup>®</sup> and EASY•Q<sup>™</sup> Brochure



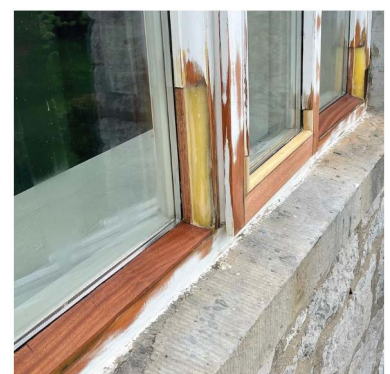
# Repair & Restore using the Repair Care system



Our Repair Care system provides a **sustainable alternative** to traditional joinery repairs. This ensures that **only decayed** and de-natured **timber is removed, leaving as much of the original joinery, detailing, moulding and original historic woodwork** as possible. The **conservation industry** now have a **solution available** to them that offers durable repairs and the ability to **conserve existing timber**.



The **DRY FIX® / DRY FLEX® & BIO FLEX™** system is the only durable **solution for decayed and damaged joinery**. **DRY FIX®** primers penetrate deep into the fibres of the wood ensuring that **DRY FLEX®** bonds permanently





# 7 Steps to a Durable Repair



Scan here for a digital 7 steps



## Step 1 Remove paint

- Sanding machine/ Burner / Scraper
- Dust Mask



## Step 2 Remove all decay

- Repair Care MINI-PROFI™ Router
- Dust Mask
- Safety glasses
- Ear protection



## Step 3 Measure moisture level (<18%)

- EASY-Q™ Wood Condition Meter



## Step 4 Prime contact area with DRY FIX®

- DRY FIX® UNI
- EASY-Q™ MIX & FIX Sticks and cups
- EASY-Q™ MIX & FIX Spatula
- EASY-Q™ Nitrile Gloves



## Step 5 Butter contact area with DRY FLEX®

- EASY-Q™ Buttering Knife
- DRY FLEX® 1, 4, 16, or BIO FLEX™ COOL, ALLROUND
- EASY-Q™ Mixing Plate
- EASY-Q™ Dispensing Gun
- EASY-Q™ Nitrile Gloves



## Step 6 Shape and finish repair

- EASY-Q™ Stainless Steel Application Knife 3cm
- EASY-Q™ Stainless Steel Application Knife 5cm
- EASY-Q™ Stainless Steel Application Knife 10cm
- EASY-Q™ Stainless Steel Application Knife 15cm
- EASY-Q™ Wipes



## Step 7 Sand finished repair and apply paint

- Sanding machine
- Paint System
- Dust Mask

Nitrile gloves should be worn when handling epoxy products.



### Tips

- Cover the brickwork, window sills and glass with EASY-Q™ Brick Tape.
- Use Perspex Strips for perfect edges when modelling, these remove easily once the resin is cured.
- Our EASY-Q™ Wipes are specially designed to remove DRY FLEX® resin from your tools.



### Good to know

- Always use EASY-Q™ Nitrile Gloves when using our products.
- Use a lint free paper towel to remove excess DRY FIX® from your repair before applying DRY FLEX® resin.

# Hours to Cure Table

<b>Repair Size: SMALL</b>	<b>0 - 5°C</b>	<b>5 - 10°C</b>	<b>10 - 15°C</b>	<b>15 - 20°C</b>	<b>20 - 25°C</b>	<b>25 - 30°C</b>	<b>30 - 35°C</b>
DRY FLEX® 1	approx 2 - 3	approx 2	1,5 - 2	approx 1 - 1.5	approx 1		
DRY FLEX® 4	40 - 48	28 - 40	14 - 28	9 - 14	6 - 9	3 - 6	approx 1.5 - 3
DRY FLEX® 16			24 - 30	16 - 24	11 - 16	8 - 11	6 - 8
BIO FLEX™ COOL	20 - 25	15 - 20	7 - 15	5 - 7			
BIO FLEX™ ALLROUND	40 - 44	25 - 40	16 - 25	12 - 16	9 - 12	6 - 9	4 - 6
<b>Repair Size: MEDIUM</b>	<b>0 - 5°C</b>	<b>5 - 10°C</b>	<b>10 - 15°C</b>	<b>15 - 20°C</b>	<b>20 - 25°C</b>	<b>25 - 30°C</b>	<b>30 - 35°C</b>
DRY FLEX® 1							
DRY FLEX® 4	38 - 46	25 - 38	12 - 25	6 - 12	2 - 6	approx 1.5 - 2	approx 1 - 1.5
DRY FLEX® 16			16 - 28	14 - 16	8 - 14	3 - 8	approx 1 - 3
BIO FLEX™ COOL	18 - 25	12 - 18	4 - 12	approx 1.5 - 4			
BIO FLEX™ ALLROUND	40 - 44	24 - 40	14 - 24	10 - 14	5 - 14	2,5 - 5	1 - 2,5
<b>Repair Size: LARGE</b>	<b>0 - 5°C</b>	<b>5 - 10°C</b>	<b>10 - 15°C</b>	<b>15 - 20°C</b>	<b>20 - 25°C</b>	<b>25 - 30°C</b>	<b>30 - 35°C</b>
DRY FLEX® 1							
DRY FLEX® 4	26 - 36	6 - 26					
DRY FLEX® 16			7 - 12	3 - 7	approx 2 - 3	approx 1 - 2	approx 1
BIO FLEX™ COOL	13 - 20	2 - 13					
BIO FLEX™ ALLROUND	27 - 37	9 - 27	4 - 9	2,5 - 4	approx 2 - 2.5	approx 1 - 2	approx 1



## Tips

- When mixing the DRY FLEX® resin, spread the resin as thinly as possible on your mixing plate to maximise the working time.
- Defects of 0-6mm in DRY FLEX® resin repairs can be repaired using DRY FLEX® Super Finish.
- If your repair gets wet during the curing stage, it is important to remove the resin and start again due to the reaction of the resin with moisture.



## Good to know

- Curing times are dependent on the depth of repair and environmental temperature.
- A minimum layer thickness of 5mm is required for repairs with DRY FLEX® 1, 4, 16, and BIO FLEX™ ALLROUND & COOL.

# BIO FLEX™ ALLROUND **BF**

## For all repairs throughout the year

BIO FLEX™ ALLROUND is the first bio-based epoxy repair resin for all types of repair throughout the year.



### Product Features

- To be used in conjunction with DRY FIX® UNI.
- Contains 40% bio-based raw materials.
- Certified, OK bio-based – 1 star.
- Ready for sanding and painting after 12 hours (at 20°C).
- For repairs with a layer thickness of 5 - 50mm.
- Application temperature: 0 - 35°C.
- Application time: 15 - 20 minutes at 20°C.

# BIO FLEX™ COOL **COOL**

## For quick repairs at lower temperatures

BIO FLEX™ COOL fastest curing resin at lower temps and is particularly suitable at temperatures below 15°C. It is ideal for both small and large repairs. Used in conjunction with DRY FIX® UNI to ensure maximum adhesion with the substrate.



### Product features:

- To be used in conjunction with DRY FIX® UNI.
- For repairs 5 - 50mm deep\*.
- Can be sanded and painted after 15 hours (at 10°C).
- Application temperature 0 - 20°C.
- Application period 20 - 25 minutes
- Excellent modelling qualities.
- Does not shrink.
- Slump resistant.
- Colour control mixing system; turns uniform transparent green when fully mixed.
- Bio-based formulation.

\* At 0 - 10°C: 5 - 50mm; at 10 - 20°C: 5 - 25mm

# DRY FLEX® 1

## For very fast, small repairs

DRY FLEX® 1 is the fastest curing permanent repair product on the market. It combines excellent modelling characteristics with a very short curing time. DRY FLEX® 1 is suitable for small quick repairs, splicing and responsive maintenance. DRY FIX® UNI provides maximum adhesion between DRY FLEX® 1 and the substrate.



### Product features:

- To be used in conjunction with DRY FIX® UNI.
- For repairs 5 - 15mm deep\*.
- Can be sanded and painted after 1 hour (at 20°C).
- Application temperature: 0 - 25°C.
- Application period: 15 - 20 minutes
- Excellent modelling qualities.
- Does not shrink.
- Slump resistant.
- Mixing control system: turns uniform pink when mixed.

\* At 0 - 10°C: 5 - 15mm; at 10 - 25°C: 5 - 10mm.

\* Now available in a small size of 120ml per set

Also available in convenient single tube, DRY FLEX® 1 (2-in-1) fits into a standard skeleton gun.

# DRY FLEX® 4

## For all repairs

DRY FLEX® 4 is ideal for permanent small to medium repairs which can be sanded and painted on the same day. DRY FLEX® 4 can be used from 0 - 35°C so is suitable for use all year round. DRY FIX® UNI provides maximum adhesion between DRY FLEX® 4 and the substrate.



### Product features:

- To be used in conjunction with DRY FIX® UNI.
- For repairs 5 - 50mm deep\*.
- Can be sanded and painted after 4 hours (at 20°C).
- Application temperature: 0 - 35°C.
- Application period: 20 - 25 minutes.
- Excellent modelling qualities.
- Does not shrink
- Slump resistant
- Mixing control system: turns uniform transparent orange when mixed.

\* At 0 - 10°C: 5 - 50mm; at 10 - 35°C: 5 - 20mm

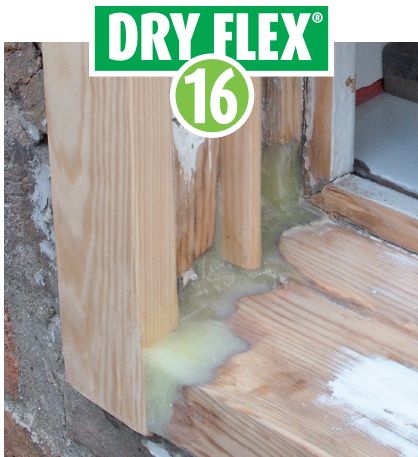
\* Now available in a small size of 120ml per set

Also available in convenient single tube, DRY FLEX® 4 (2-in-1) fits into a standard skeleton gun.

# DRY FLEX® 16

## For larger repairs

DRY FLEX® 16 has exceptional slump resistance and modelling characteristics making it ideal for larger repairs. With an application time of up to 2 hours, DRY FLEX® 16 is suitable for large scale projects. DRY FIX® UNI provides maximum adhesion between DRY FLEX® 16 and the substrate.



### Product features:

- To be used in conjunction with DRY FIX® UNI.
- For repairs 5 - 50mm deep.
- Can be sanded and painted after 16 hours (at 20°C).
- Application temperature: 10 - 35°C.
- Application period: 1.5 - 2 hours.
- Excellent modelling qualities.
- Does not shrink.
- Slump resistant.
- Mixing control system: turns uniform green when mixed.

# DRY FIX® UNI

## Universal stabiliser for all DRY FLEX® repair products.

DRY FIX® UNI is a universal stabiliser ensuring maximum adhesion between any DRY FLEX® repair product and the substrate.



### Product features:

- Compatible with BIO FLEX™ ALLROUND, BIO FLEX™ COOL, 1, 4 & 16.
- Extra long pot-life of 1 hour.
- Repairs with any DRY FLEX® can be completed up to 24 hours after application of DRY FIX® UNI.
- Application temperature: 0 - 35°C.
- Unique colour control mixing system; turns yellow when fully mixed.
- Solvent free.

\* Now available in a small size of 120ml per set

# DRY FLEX® SF

## Durable fine surface filler

DRY FLEX® Super Finish is a high performance fine surface filler. Suitable for weathered timber, cracks, nail holes and small defects. Easy to apply and extremely fast curing, DRY FLEX® Super Finish is the only permanent, flexible epoxy based surface filler available.



### Product features:

- For repairs 0 - 6mm deep.
- Excellent adhesion to all substrates.
- Can be sanded and painted after 30 minutes (at 20°C).
- Application temperature: 0 - 30°C.
- Application period: 7 - 10 minutes.
- No primer necessary.
- Does not shrink.
- Slump resistant.

# DRY SEAL™ MP

## Multi-purpose putty replacement

DRY SEAL™ MP is a moisture and UV-resistant alternative to traditional putty. Unlike linseed oil putty, it cures very quickly and remains permanently elastic, with excellent adhesion to glass, wood, metal and stone. Independently tested, it is the only product guaranteed to be compatible with hot-melt butyl, PVB foils and glazing tapes.



### Product features:

- Can be painted in as little as 2 hours (at 20°C).
- Application temperature: 5 - 40°C.
- Application period: 15 minutes.
- Available in white and brown.
- Can be used in a standard skeleton gun.

DRY SEAL™ MP is a quick to apply bedding and face glazing compound and is particularly suitable for new window manufacture and all restoration applications. It is ideal for glazing new windows and renovation projects as it is compatible with double-glazing, including slim-line units, laminated and acoustic glass.

# EASY-Q™ Tools and Accessories



## EASY-Q™ High Performance Dosing Gun

### Application

"High Performance Dosing Gun. The most powerful and user-friendly universal 2K dosing gun. It can dose all common professional epoxy products: 300-100ml, 300-300ml, 200-100ml. A torsion-resistant design, so that the dosing of both components is always even. Contributes to clean and safe working environment.



## EASY-Q™ Professional dispensing gun

### Application

Heavy duty single barrelled dispensing gun for all DRY FLEX® 2-in-1 products and DRY SEAL™ MP. Robust metal construction with reinforced handle. Rotating barrel for easy application of product at all angles. Geared mechanism for easy, smooth dosing of viscous products.



## EASY-Q™ Buttering Knife

### Application

The EASY-Q™ buttering knife has been specially developed for applying the repair paste in hard-to-reach areas. The buttering knife is part of the Special Tools. The buttering knife has an extra narrow blade, so that the repair paste can easily be applied to, for example, sill/style joints and grooves against the glass line. The buttering knife is made of stainless steel.



## EASY-Q™ Sealant Knife

### Application

The EASY-Q™ sealant knife is specially developed for finishing all types of (glazing) putty. This is a time-saving tool that increases the quality and durability of repairs.



## EASY-Q™ Wood Condition Meter

### Application

Wood Condition Meter to measure moisture content. Suitable for checking the presence of soft wood. Simple traffic light system and audible warning for quick readings. Equipped with a battery check function (battery included).

## Description

### EASY•Q™ Modelling Knife 3cm Stainless Steel



#### Application

“EASY•Q™” stainless steel application knives for the mixing of Repair Care products and the modelling of repairs. Unique stainless steel blade shape with right-angled edges, making it easy to form accurate corners. Long, ergonomic handles for a comfortable grip and clean working.

### EASY•Q™ Modelling Knife 5cm Stainless Steel



#### Application

EASY•Q™ stainless steel application knives for the mixing of Repair Care products and the modelling of repairs. Unique stainless steel blade shape with right-angled edges, making it easy to form accurate corners. Long, ergonomic handles for a comfortable grip and clean working.

### EASY•Q™ Modelling Knife 10cm Stainless Steel



#### Application

EASY•Q™ stainless steel application knives for the mixing of Repair Care products and the modelling of repairs. Unique stainless steel blade shape with right-angled edges, making it easy to form accurate corners. Long, ergonomic handles for a comfortable grip and clean working.

### EASY•Q™ Modelling Knife 15cm Stainless Steel



#### Application

EASY•Q™ stainless steel application knives for the mixing of Repair Care products and the modelling of repairs. Unique stainless steel blade shape with right-angled edges, making it easy to form accurate corners. Long, ergonomic handles for a comfortable grip and clean working.

### EASY•Q™ Set Stainless Steel Modelling Knives



#### Application

EASY•Q™ stainless steel application knives for the mixing of Repair Care products and the modelling of repairs. Unique stainless steel blade shape with right-angled edges, making it easy to form accurate corners. Long, ergonomic handles for a comfortable grip and clean working. Available in four options: 3 cm: for applying DRY FLEX® - 5 cm: for mixing DRY FLEX® 10 cm: for smaller repairs - 15 cm: for larger repairs

## Description



### EASY•Q™ Modelling Spatula 4cm Plastic

#### Application

EASY•Q™ plastic application knives for the mixing of Repair Care products and the modelling of repairs. Unique plastic blade shape with right-angled edges, making it easy to form accurate corners. Long, ergonomic handles for a comfortable grip and clean working.



### EASY•Q™ Modelling Spatula 8cm Plastic

#### Application

EASY•Q™ plastic application knives for the mixing of Repair Care products and the modelling of repairs. Unique plastic blade shape with right-angled edges, making it easy to form accurate corners. Long, ergonomic handles for a comfortable grip and clean working.



### EASY•Q™ Modelling Spatula 8cm Plastic - Stiff

#### Application

EASY•Q™ plastic application knives for the mixing of Repair Care products and the modelling of repairs. Unique plastic blade shape with right-angled edges, making it easy to form accurate corners. Long, ergonomic handles for a comfortable grip and clean working.



### EASY•Q™ Modelling Spatula 13cm Plastic

#### Application

EASY•Q™ plastic application knives for the mixing of Repair Care products and the modelling of repairs. Unique plastic blade shape with right-angled edges, making it easy to form accurate corners. Long, ergonomic handles for a comfortable grip and clean working.



### EASY•Q™ Set Modelling Spatulas-Plastic

#### Application

EASY•Q™ plastic application knives for the mixing of Repair Care products and the modelling of repairs. Unique plastic blade shape with right-angled edges, making it easy to form accurate corners. Long, ergonomic handles for a comfortable grip and clean working. This set includes 4 application knives: 4 cm: for applying DRY FLEX®. 8 cm stiff (dark green knife): for mixing DRY FLEX®. 8 cm: for smaller repairs. 13 cm: for larger repairs.

## Description

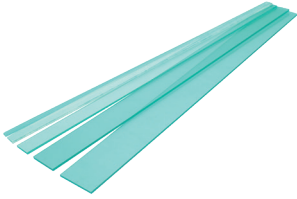


### EASY-Q™ MIX & FIX™ Set (50)

#### Application

This Multi-Pack consisting of 50 cups and wooden mixing spatulas to be used to mix any of our Repair Care DRY FIX® products.

**Content:** 50 pieces per set



### EASY-Q™ Perspex Sheets

#### Application

Perspex strips to make the modelling of polygonal repairs. Easy to remove after curing.

**Contents**  
5 strips



### EASY-Q™ Sealant Applicator

#### Application

Flexible silicone applicator for use with DRY SEAL™ Elastic Glazing Sealant. Flexible construction for smooth application of DRY SEAL™. Specially designed corners to achieve different application angles.



### EASY-Q™ Brick Tape

#### Application

The EASY-Q™ Brick Tape has been developed for maximum adhesion in order to ensure preservation of brickwork when completing repairs. For masking off (brick) stone. Width 10 cm. Note: Do not use this tape on smooth surfaces, because there is a risk that the strong adhesive layer remains.

**Contents:** 40 metres.



### EASY-Q™ Disposable Nitrile Gloves XL (50pcs)

#### Application

Essential when working with epoxy. Extra long 30cm gauntlet for added protection. The only Nitrile gloves conforming to European standards regarding personal protective equipment. Textured fingertips for a better grip. Powder and latex free (suitable for sensitive skin).

## Description



### EASY-Q™ Disposable Nitrile Gloves L (50pcs)

#### Application

Essential when working with epoxy. Extra long 30cm gauntlet for added protection. The only Nitrile gloves conforming to European standards regarding personal protective equipment. Textured fingertips for a better grip. Powder and latex free (suitable for sensitive skin).



### EASY-Q™ WIPES (120pcs)

#### Application

Wet wipes for quick and effective cleaning of tools and hands. Epoxy, paint, grease, dirt and oil are thoroughly removed. Thanks to the bio-based cleaning fluid on the wipes, no water is needed when using them. The EASY-Q™ WIPES have a large surface area, which means that far fewer wipes are needed than with all other available cleaning wipes. The WIPES can also be used as refills in the previous WIPES barrels.

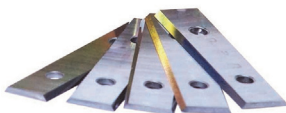
**Contents:** 120 pieces



### Repair Care Scraper

#### Application

For removing paint and finishing cured repairs. Robust steel construction with 50mm wide blade. Ideal for removing paint prior to application of DRY FLEX®. Quickly pares back cured repair before painting. Includes one Tungsten Carbide reversible blade (pack of 5 replacement blades available).



### Repair Care Scraper Blades (Pack 5)

#### Application

Pack of 5 replacement blades



### Premium Round Cutter ø 4.75mm

#### Application

For removal of decay and preparing open joints.

## Description



### Premium Straight Cutter ø 4.00mm

#### Application

Very high quality cutter for removing affected wood.



### EASY•Q™ Economy Round Cutter ø 9.5mm

#### Application

For removal of decay and preparing open joints.



### Sanding Disc 36 grit

#### Application

Replacement Sanding Disc - 36 grit.



### Sanding Disc 60 grit

#### Application

Replacement Sanding Disc 60 grit



### Sanding Disc Brown (Coarse)

#### Application

Replacement Sanding Disc Brown 'coarse'

## Description



### Sanding Disc Red (Smooth)

**Application**

Replacement Sanding Disc Red 'Smooth'



### EASY-Q™ Repair Care Box 5

**Application**

Systemainer for storing and transporting products and tools. Equipped with T-loc closure allowing systemainers to be connected.

**Contents:** 40 x 30 x 42 cm (bxdxh)



### Disposable Brushes

**Application**

Box of 12 paint brushes (1/2") for application of DRY FIX®.



### EASY-Q™ Mixing Plate

**Application**

Mixing plate for use with all types of DRY FLEX® smooth surface for easy mixing of DRY FLEX®. Bright white finish to make removal of all residue easier. Raised edge for stable grip.

Size: 270 x 440 mm.



### EASY-Q™ Mixing Plate medium

**Application**

Mixing plate for use with all types of DRY FLEX® smooth surface for easy mixing of DRY FLEX®. Bright white finish to make removal of all residue easier. Raised edge for stable grip.

Size: 270 x 350 mm.

# Description



## Universal Colour Pigments New Product

With the Repair Care Universal Colouring Concentrates, you can effortlessly tint DRY FLEX® repair compounds to match the desired wood shade. This allows you to achieve visually harmonious and long-lasting results – perfectly matched to the original substrate.

Colours:  
Teak, Spruce, Pine, Mahogany, Light Oak, Walnut

## Starter Kit

### Application

'The Repair Care Starter Kit includes everything you need to get started with small to medium durable repairs in a handy 2-in-1 cartridge format, as well as providing you with a selection of EASY•Q™ tools'



Contains: DRY FIX® Uni Small, DRY FLEX SF 2IN1, Dry Flex 4 2IN1, Mixing plate medium, EASY•Q™ Perspex Sheets - Set of 5, EASY•Q™ MIX & FIX™ 2 cups & sticks and 3 brushes, 4 EASY•Q™ XL gloves, Sample Wipes x 6 per kit (3 packs), EASY•Q™ plastic spatulas set, EASY•Q™ Professional dispensing gun, Product brochure, 7 Step card  
H11cm x W 29cm x L 37cm

## Contractor Pack

### Application

'The ultimate all-in-one professional kit featuring a complete range of EASY•Q™ tools and accessories for flawless, efficient wood repairs – neatly packed in a durable Systemainer'



Contains: EASY•Q™ Mixing Plate, EASY•Q™ High Performance Dosing Gun, EASY•Q™ Set Stainless Steel Modelling Knives, EASY•Q™ Wipes 120pcs, EASY•Q™ Disposable Nitrile Gloves XL (50pcs), EASY•Q™ Perspex Sheets - Set of 5, EASY•Q™ Mix and Fix Set 12 pc, EASY•Q™ Disposable Brushes, EASY•Q™ Scraper, 7 step card, Product brochure, Systemainer  
W44cm x D29cm x H39 cm

# Notes

[www.repair-care.co.uk](http://www.repair-care.co.uk)



Repair Care United Kingdom  
Tel.: +44 (0)1827 302 517  
E-mail: [supportuk@repair-care.com](mailto:supportuk@repair-care.com)